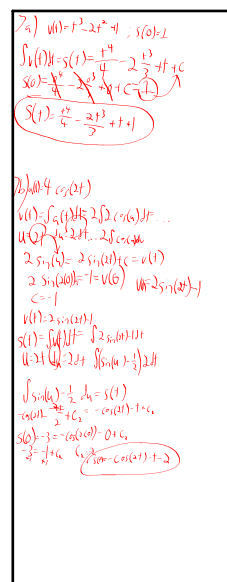
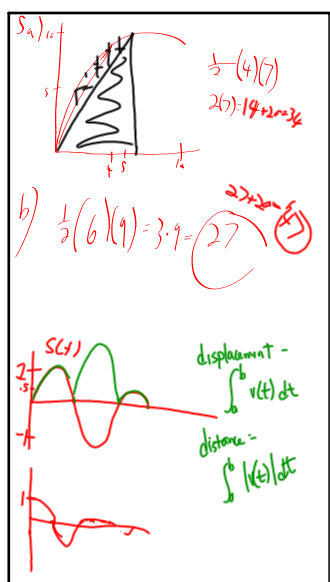


Jan 10-7:32 AM



Jan 10-7:33 AM



Jan 10-7:33 AM

8) 9. $v(t) = 1 - \sin(t)$; $s(0) = -3$

$$s(t) = \int v(t) dt = t - \cos(t) + C$$

$$s(0) = 0 - \cos(0) + C = -3$$

$$-1 + C = -3 \quad C = -2$$

$$s(t) = t - \cos(t) - 2$$

Jan 10-7:33 AM

HW for Wed

6.7/finish 1-10

also 11, 12, 15, 16, 61

Jan 10-7:33 AM